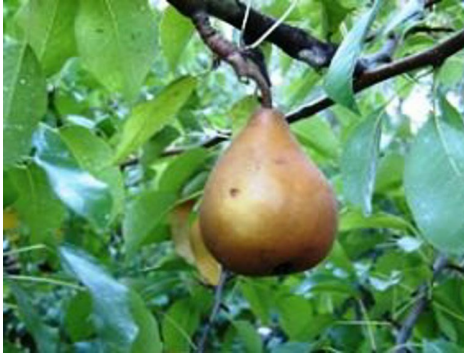


Pyrus communis Beurre Bosc



Pyrus communis Beurre Bosc

Botanical Name:	Pyrus communis Beurre Bosc
Common Names:	European Pear, Common Pear,
Native:	No
Foliage Type:	Deciduous
Plant Type:	Citrus & Fruit, Trees
Plant Habit:	Pyramida, Rounded, Spreading, Upright

Description:

Deciduous self-sterile Winter Pear tree that has fragrant white flowers in Spring followed by small, conical brownish-yellow sweet fruit that matures mid-season. Fruit flesh is white and juicy. Fruit is great to use in deserts or to eat as is. Fruit can be stored for up to two months. This variety has a low chill requirement. Some cross-pollinators include Josephine de Malines, Beurre d'Anjou, and Packham's Triumph. Grows approx. 6m tall.

Family Name: Rosaceae

Origin: Europe

Characteristics:

Foliage Colours: Green

Flower Colours: White

Flower Fragrant: No

Flowering Season: Spring

Fruit: Yes

Requirements:

Growth Rate: Moderate

Maintenance Level: Medium

Water Usage: Medium / Moderate

Tolerances:

Drought: Medium / Moderate

Frost: High

Wind: High

Mature Height: 4-10m **Position:** Full Sun

Mature Width: 4-10m **Soil Type:** Any, Clay, Loam, Sandy, Well Drained

Landscape Use(s): Courtyard, Edible Garden, Fragrant Garden, Mass Planting

Pest & Diseases:

Generally trouble free, Mites

Cultural Notes:

Prefers a full sun position with well-drained fertile soil with a PH of 6 to 7.5. Water regularly until established, then provide an occasional deep water throughout the warmer months. Prune as required in Winter. Feed with manure and a suitable slow release fertiliser.

Plant Care:

Annual slow release fertiliser, Keep moist during dry periods, Mulch well

Disclaimer: Information and images provided is to be used as a guide only. While every reasonable effort is made to ensure accuracy and relevancy of all information, any decisions based on this information are the sole responsibility of the viewer.